

## New Look Bulletin

Welcome to the second of our new look bulletins, with an exciting new design and layout. This new publication has been in the works for many months now and we are pleased to finally share this with you!

Firstly, I would like to give a *short* explanation of that “Squiggly Thing” up the top of the front page. This is Glen Waverley Uniting Church’s new ‘Visual Identity’. It will be used across all forms of church media and publications in the future as an emblem by which to identify this church.

There are a number of meanings to this design. It was intended to reflect the church vision statement by showing our connected community (chain), inclusive community (larger circles) and our missional outreach (outward reaching corner). This, however, is only one interpretation of the design, I encourage you to find your own meaning and connection to the church through it.

Secondly, as you can see the Bulletin itself has a new layout. In brief, the front page will contain the header and service information, the second page will contain the Diary Dates for that week (now known as ‘What’s on this week?’), the third will have Thoughtful Flowers followed by notices, and the back page notices and contact information. (Rosters can now be found on the wiki or outside the church office.) This new bulletin is paper saving and has an easy to understand, flowing layout.

At this month’s combined service on the 29th January the new ‘Visual Identity’ will be officially launched and following that, the new layout monthly bulletin will be released in February.

Your feedback on any of these new initiatives is always welcome.

Aaron Blakemore  
Design and Communication Worker  
on behalf of the Communications Committee.

PS. Thank you very much for giving your feedback so far, we encourage you to keep discussing, sharing and giving your thoughts to the office. All of this feedback is being forwarded to the Communications Committee.

### GLEN WAVERLEY UNITING CHURCH

Cnr Bogong Avenue & Kingsway,  
Glen Waverley, VIC, 3150

Office Hours: Mon-Fri 9am - 5pm  
(except Public Holidays)

9560 3580  
office@gwuc.org.au  
gwuc.org.au

### MINISTRY TEAM

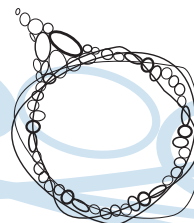
REV. GREG FRY  
9561 3031 gjandco@bigpond.net.au

REV. ROSEMARY CARTER  
9560 9843 rosemary.carter@internode.on.net

ALISON CLARKSON - SENIORS  
9560 3167 madingwall@optusnet.com.au

ALANEE HEARNshaw - YOUTH & YOUNG ADULTS  
0402 030 342 alanee.h@gmail.com

BELINDA CLEAR - CHILDREN & FAMILIES  
9560 3580 baclear@bigpond.com



# Glen Waverley

## Uniting Church

## Welcome to Our Church

*GWUC is a faithful, Christ-centred community that meets God and shares that unconditional love: meet\_god@anytime.with.us*

*If you're new to our congregation, please say hello at the welcome table in the foyer after the service.*

**TODAY**      SUNDAY JANUARY 15      *2nd Sunday after the Epiphany*

**10am**      Worship      Rev. Rosemary Carter - Holy Communion

1 Samuel 3:1-10 (11-20); 1 Corinthians 1:12-20; Psalm 139:1-6, 13-18; John 1:43-51

SUNDAY JANUARY 22      *3rd Sunday after the Epiphany*

**10am**      Worship      Alison Clarkson & Belinda Clear

Jonah 3:1-5, 10; Psalm 62:5-12; Mark 1:14-20; 1 Corinthians 7:29-31



## What's on this week?

(Legend: R1-Room 1, R2-Room 2, R3-Room 3, R4-Room 4, K-Kitchen, F-Fellowship Area, C-Church, H-Hall, V-Vestry, O-Outside Venue)

### Monday 16 January

8.00 pm Badminton H Enq: Ian McMillan 9803 1813

### Thursday 19 January

3.00 pm Office Closed O  
8.00 pm Badminton H Enq: Ian McMillan 9803 1813

### Sunday 22 January

10.00 am Combined Service C Alison Clarkson & Belinda Clear

---

### PLEASE NOTE...

#### 2012 Commencement dates

**Friday Lectionary Group** will recommence on Friday 27th January, meeting in Room 2 from 9.30 am.

**Playgroups** will recommence during the second week of February 2012.

**Leisure Time** will recommence on Monday 6th February.

**The Hub** will recommence on Tuesday 7th February, 10am-2pm. In 2012, The Hub will be operating on Tuesday and Thursdays 10am-2pm, and Wednesdays 10am-12noon during school terms.

## Thoughtful Flowers

Today's Thoughtful Flowers are given by Alison Clarkson in loving memory of **Sandy Dingwall** and **Lynette** and **Brian Clarkson**.

Arranged by: Joyce Ennor



## 2012 Worship Services

Throughout January there will only be one service of worship each week at 10am. From February there will be 5 worship services each Sunday at the following times: 8am, 9.15am, 11am, 4.30pm & 7pm. Please note the new starting time of 9.15am.

## Combined Service - 29 January

*We need buttons!* As part of the combined service we are in need of some large buttons with large holes. Could you please search through your old buttons and bring any spare to the church office by Monday 23 January.

Also, please bring a family picnic and join with us for lunch on the church lawn after the 10.00am Combined Service. Hope to see you there.

## Children and Families

Many thanks to all the wonderful people who have helped out in all areas of Children and Families Ministry during 2011. We are currently looking at our programs for 2012 and are seeking volunteers to assist us in this exciting area of Ministry. If you are interested in assisting in *any way* please contact Belinda Clear.

## Kenya Mission Trip

Please continue to keep Alanee, Joel, Kat, Jason, Steven, Pam and Lyn in your prayers as they share time with the 45 children at the Mission in Action Orphanage at Nakuru, Kenya, and also for their work around the local community to those in need.

If you would like to follow their adventures go to:

[katandjasinafrica.wordpress.com](http://katandjasinafrica.wordpress.com)

## 2012 Rosters

Glen Waverley Uniting Church is a busy congregation. To keep things running smoothly takes a large team of volunteers who contribute in a variety of ways.

As we move into the New Year, please consider how you might be able to contribute to the life of the congregation.

Rosters for those wishing to assist with various tasks around the church are on the office counter. Please add your name if you are able to assist.