

Glen Waverley

Uniting Church

Welcome

GWUC is a faithful, Christ-centred community that meets God and shares that unconditional love: meet_god@anytime.with.us

SUNDAY PREACHING PLAN - May 2013				
Time	May 5 Easter 6	May 12 Easter 7	May 19 Day of Pentecost	May 26 Trinity Sunday
8.00 am	Peter Baker	Lois Hosking	Rev Evan Laidlaw Communion	Rev Brace Bateman Communion
9.15 am	Rev Wal Baker Communion	Rev Greg Fry Baptism	Rev Greg Fry	Alanee Hearnshaw
11.00 am	Rev Wal Baker	Alanee Hearnshaw	Rev Greg Fry Communion	Rev Greg Fry Ecumenical
4.30 pm	C&F	Belinda Clear	Belinda Clear	Belinda Clear
7.00 pm	Alanee Hearnshaw	Alanee Hearnshaw	Alanee Hearnshaw	Alanee Hearnshaw
Lectionary	Acts 16:9-15 Psalm 67 Revelation 21:10, 22-22:5 John 14:23-39 or John 5:1-9	Acts 16:16-34 Psalm 97 Revelation 22:12-14, 16-17, 20-21 John 17:20-26	Acts 2:1-21 or Genesis 11:1-9 Psalm 104:24-34, 35b Romans 8:14-17 or Acts 2:1-21 John 14:8-17, (25-27)	Proverbs 8:1-4, 22-31 Psalm 8 Romans 5:1-5 John 16:12-15
Liturgical Colour	White	White	Red	White

Alternative for May 12 - Ascension Day

Acts 1:1-11
Psalm 47 or Psalm 93
Ephesians 1:15-23
Luke 24:44-53

APRIL

DATES FOR YOUR DIARY

22 April	<i>2pm</i>	Leisure Time AGM
27 April	<i>6.30pm</i>	Chinese Dinner
28 April	<i>2.30pm</i>	Service of Praise
MAY		
11 May	<i>10am</i>	Connecting & Communication with People in our Community
23 May	<i>10am</i>	Cancer Council Australia' Biggest Morning Tea at The Hub
26 May	<i>2pm</i>	Pleasant Sunday Afternoon of Popular American Music



**GLEN WAVERLEY UNITING CHURCH
ADULT FELLOWSHIP**

ANNUAL LUNCHEON

Tuesday 7th May 2013

Lunch served 12.00 noon

GUEST SPEAKER

ANNETTE ALLISON

FROM

**THE ROYAL FLYING
DOCTOR SERVICE**



Tickets: \$20.00

RSVP with payment by Friday 26th April

Tickets available from:

Diana Coles, Jacqui King, Barbara Thompson
Norma Saxton, Margaret Drummond,
Geraldine Fleming and the Church Office

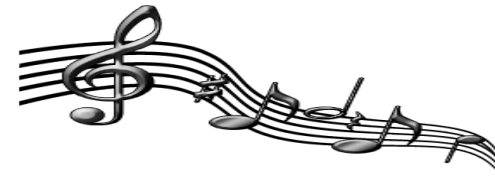
Please note that the Trading/Craft Table will be open.

**UNITING VOICES
OF
GLEN WAVERLEY UNITING CHURCH
Presents**

**A PLEASANT SUNDAY AFTERNOON
OF POPULAR AMERICAN MUSIC**

BY

THE MONASH CHORALE



A fun show of American music including Spirituals, Swing, Musicals &
All That Jazz

Sunday, 26 May 2013 at 2pm

Glen Waverley Uniting Church
Corner Kingsway & Bogong Avenue, Glen Waverley

Admission: \$22 (Adults), \$20 (Concession)
Afternoon tea provided

Proceeds support our church programs & activities

Ticket enquiries: 9560 3580 (Church office) or 9884 4061

Invitation to Volunteers and the Congregation

A visual display celebrating 35 years of Leisure Time will be presented so come and enjoy the memories.

Afternoon Tea will be served from 2pm.

Under the Constitution all Volunteers and Church members are eligible to attend and cast a vote so come along and participate.

Agenda papers will be available from the Church Office from 15 April to 21 April, 2013.

Notice of Meeting

The Annual General Meeting
of the
Glen Waverley Uniting Church
Leisure Time

will be held at the
Glen Waverley Uniting Church
on
Monday 22 April 2013, at 2.30pm

The Agenda includes:

- * Annual Report
- * Audited Annual Accounts
- * Election of Committee Members
- * Appointment of Auditor

Pam McDonald
Secretary

Special Morning Tea at The Hub

Thursday 23rd May, 10am - 12noon

Come and join in our Cancer Council Australia's Biggest Morning Tea at The Hub. All donations will go to Cancer Council Victoria

Bring your family and friends.

Chinese Dinner

Peranakan and Baba-Nyonya are terms used for the descendants of Chinese immigrants marrying locals in Malaysia & Indonesia.

Join us & discover the Peranakan culture.



ENJOY

*Dinner, Entertainment
Auction / Trading Table
Door prizes & lots more*

Saturday 27th April 2013

6.30 start

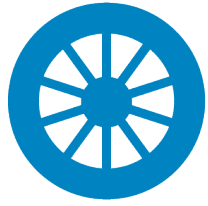
\$22.00 per adult / \$12 per child (2 to 12 yrs)

\$60 per family: 2 adults + 2 children below 12 yrs

**Tickets available after Church Services
or from Church Office 03 9560 3580**

For more details, contact Vida 0411 246 254

Proceeds support our Church Programme & Activities



COMMUNITY HUB

THE HUB

The number of people coming to The Hub has slowly increased during the past 2 months. Earlier this year some days had been very quiet, but this week has been very busy. A few people have called in for some company and a cuppa, and many to practise their English through conversation.

On Saturday 11th May, 10am – 12.30pm, we will be having a time for sharing as we hear and talk about connecting and communicating with the people in our community. This is not just for The Hub volunteers; everyone is welcome. Please see separate notice in this bulletin.

Our first Special Morning Tea this year was on Thursday 21st March, when we served hot cross buns. Special thanks go to Muddings Kingsway Bakery who donated the delicious hot cross buns. Donations of \$270 were received for The Royal Children's Hospital Good Friday Appeal. Staff from The Body Shop at The Glen joined us as we worked together in this special community event. Thank you to those who came and supported this event, and to those who gave a donation.

Come and join us at The Hub for a cuppa, a biscuit and a chat. The Hub operates in the church foyer on Tuesday and Thursday 10am – 2pm, and Wednesday 10am – 12noon, during school terms. We would love to see you.

COOEE

Cooee is operating on Friday lunchtime, and the people who come continue to enjoy each other's company. If you would like some company on a Friday, come along to Cooee. Bring your own lunch; a cuppa and biscuits will be provided. Come and make new friends, have a chat, and after lunch enjoy a few games together.

LEISURE TIME

Leisure Time will be celebrating 35 years of service to the Glen Waverley community, as a major part of our AGM at 2pm on Monday April 22 in Room 1

All past and present Leisure Time volunteers and the congregation are encouraged to come along and see old friends and to hear what Leisure Time is doing now. There will be a photo display on the new TV, and other items of interest. Afternoon tea will be served from 2pm and the meeting will begin at 2.30pm. We would love to celebrate this wonderful achievement with you, and honour the work done with our guests over so many years.

PLAYGROUP

All three playgroups have completed a very happy Term 1. All groups are full and the steady stream of enquiries for places continues. We have been pleased to welcome many new mothers and children, who now feel very much at home with us. Apart from our usual activities, the hot weather has been a great opportunity for everyone to enjoy water play, which even included a "car wash" session for our toy cars!

Our term concluded with reminders about our Christian festival of Easter, with some special craft activities for mothers to share with their children, and then hot cross buns for morning tea and an Easter egg hunt. We were glad to welcome some passing members of our Church family and guests from The Hub, who were able to call in to see the fun we were having.

Our Playgroup Support team has been delighted to welcome new members Chris Krahn, Sheila Chan and Rosalie O'Day, and to welcome back Angel Shea. We have really appreciated their enthusiasm and skills. We are also grateful to Pamela McDonald and Margaret Duncan who have volunteered to be on standby when needed, and to all of you who have supported us through your interest and prayers.

If you would like to know more about any of these activities, or if you would like to help in any way, please contact Judith on 98038373.

Connecting and Communicating with People in our Community

There will be a time of sharing for The Hub volunteers and anyone else who would like to come on Saturday 11th May, 10am – 12.30pm.

We will hear and talk about the different ways and resources that can be helpful to us as we have conversations with the people in our community and in particular those who come from overseas.

Morning tea will be provided.

It will be helpful if you can please contact either Judith Greenwood (9803 8373) or Laurel Muir (95601518) if you would like to attend.

GLEN WAVERLEY UNITING CHURCH

Ministry to Seniors

*Make a joyful noise to God
Sing the glory of his name
Give to him glorious praise*

Sunday 28 April
2.30pm

A service of praise



Join us as we sing favourite and well known hymns
introduced by Warren Bartlett and led by Free Spirit.

You are invited to note one or two of your favourite
hymns on the list on the Office counter, from which
we will prepare the program.

Afternoon tea will be served after the service.

GLEN WAVERLEY UNITING CHURCH

STORY HUB



**11AM
EVERY THURSDAY
DURING SCHOOL
TERMS!**

**Come along for some
FREE fun!!**

Preschool Aged Children

Stories & Songs for children

Cuppa and chat for adults

**cnr Kingsway and Bogong Avenue
Glen Waverley**

Are you in Grade 4 - Year 8

**An exciting new group
just for you will be
starting on Sunday 14
April during the
9.15am service.**



**If your parents
don't attend the
9.15am service,
they can drop you
off and pick you up
at about 10.15am**



For more information, please
contact Belinda on 0400 559 423
or baclclear@bigpond.com

Strathdon Community Art Show

Strathdon Community is having its 10th Annual Art Show on Friday 19 April from 7pm to 9pm (Presentation Night), Saturday 20 April from 10am to 4pm, and Sunday 21 April from 12noon until 4pm. Entry is \$15.

Also its Fete is being run in conjunction with the Art Show from 10am onwards on Saturday 20 April. Come along and enjoy the fete and see the art show and maybe buy a painting.

Inclusive Community

Munch with a Bunch - lunch at the RSL next Sunday. COST: Seniors' meal - two courses \$17. RSVP by next Wednesday 10 April to Jan Clear or Heather in the office. We need your money by then too, please.

Sunday 21 April - Morning tea after the 11am service. Put this date in your diary.

At our last meeting, we received a letter from Joy Jackson telling us that she needs to resign from our committee because she and David are now living in Berwick and are attending Berwick Uniting Church. Joy has been a member of our committee for quite a while and we will miss her valuable contributions.

Next Inclusive Community meeting - Wednesday 17 April at 10am at the church.