

# Glen Waverley

## Uniting Church

### PREACHING PLAN - September 2013

Time	September 1 Pentecost 15	September 8 Pentecost 16	September 15 Pentecost 17	September 22 Pentecost 18	September 29 Pentecost 19
8.00 am	Ross Mackinnon Communion	Peter Baker Ross Mackinnon Communion	Ross Mackinnon Communion	Ross Mackinnon	10am Combined Worship Alanee Hearnshaw
9.15 am	Rev Warren Bartlett Alison Clarkson Communion	Alanee Hearnshaw	Alanee Hearnshaw	Rev Warren Bartlett Alison Clarkson	Celebration of ministry and vision
11.00 am	Rev Warren Bartlett	Alanee Hearnshaw	Rev Warren Bartlett	Alison Clarkson	Jeremiah 32:1-3a, 6-15 Psalm 91:1-6, 14-16 1 Timothy 6:6-19 Luke 16:19-31
4.30 pm	Belinda Clear	Belinda Clear	Belinda Clear	School Holidays	Green
7.00 pm	Alanee Hearnshaw	Alanee Hearnshaw	Alanee Hearnshaw	Youth and Young Adults Camp	Green
Lectionary	Jeremiah 2:4-13 Psalm 81:1, 10-16 Hebrews 13:1-8, 15-16 Luke 14:1, 7-14	Jeremiah 18:1-11 Psalm 139:1-6, 13-18 Philemon 1-21 Luke 14:25-33	Jeremiah 4:11-12, 22-28 Psalm 14 1 Timothy 1:12-17 Luke 15:1-10	Jeremiah 8:18 - 9:1 Psalm 79:1-9 1 Timothy 2:1-7 Luke 16:1-13	Green
Liturgical Colour	Green	Green	Green	Green	Green

## Welcome

*GWUC is a faithful, Christ-centred community that meets God and shares that unconditional love: [meet\\_god@anytime.with.us](mailto:meet_god@anytime.with.us)*

### AUGUST

### DATES FOR YOUR DIARY

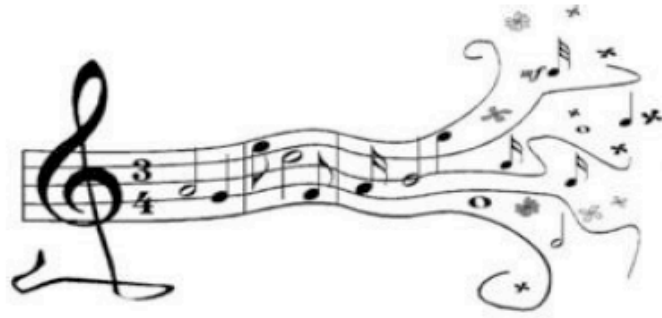
<b>11 August</b>	<i>2.30 pm</i>	Senior Service
<b>25 August</b>	<i>10 am</i>	Combined Service
<b>25 August</b>	<i>11 am</i>	Congregational Meeting
<b>25 August</b>	<i>2 pm</i>	An Afternoon With Free Spirit
<b>29 August</b>	<i>10 am</i>	Muffin Morning Tea
<b>31 August</b>	<i>9.30 am</i>	Safe Church Training
<b>SEPTEMBER</b>		
<b>14 September</b>	<i>10 am</i>	Seniors' Seminar "Looking Forward"



**GLEN WAVERLEY UNITING CHURCH**

Presents

*AN AFTERNOON WITH  
FREE SPIRIT*



*Featuring contemporary,  
sacred & secular music, jazz and  
new comedy not to be missed!*

**Sunday 25<sup>th</sup> August 2013  
2:00pm**

**Glen Waverley Uniting Church**

Corner Kingsway & Bogong Avenue, Glen Waverley 3150

Admission \$15.00 / \$12 concession  
includes Afternoon Tea

Tickets available from Church Office 03 9560 3580  
or Vida (0411 246 254)

Proceeds support our Church Programme & Activities



## MUFFIN MORNING

Join us for a variety of homemade muffins,  
tea and freshly brewed coffee



Where: **Glen Waverley Uniting Church**  
cnr Bogong Ave & Kingsway

When: **Thursday 29<sup>th</sup> August 2013**

Time: **10.00 am to 12.00 noon**

**ALL WELCOME**

If you are planning to attend, please add your name to  
the list on the office counter.

## Seminar for Seniors

- Date: Saturday 14 September  
Time: 10am - 3pm  
Place: Glen Waverley Uniting Church  
Theme: "Looking Forward"  
- Planning for future care needs for yourself, your partner or your parents.  
- Healthy nutrition  
- Pre-planning a funeral.
- Cost: \$5 including lunch.

## September NewView

Our next issue of NewView will be in September, but we need you to start thinking about it now! Our theme will be 'Your Story Must Be Told' and we look forward to hearing the varied and interesting stories people in our community have - but are probably unknown to most of us.

We hope that you will either:

1. tell us the names of those whose story you would like to know about (young people, older people), or
2. interview that person and send us the story to publish.

You might try a brief biography covering some (or all) of the following:

- where the person comes from and where educated;
- who/what have been the greatest influences on that person;
- what work the person has done and/or is currently doing;
- what interests the person has;
- how/why the person came to GWUC, and what involvement occurs here;
- where and why this person feels inspired to be engaged - what values are held;
- what this person hopes for personally and in GWUC's future directions.

If you can fit all this into about 500 words that would be great!

If you don't feel confident about writing this up yourself, let me know the name of the person whose story you would like to know about and I will try to organise a biographer for them. And if you would like to help with the writing, that would be fantastic! Contact Robin Pope by August 25 at [popesr@aapt.net.au](mailto:popesr@aapt.net.au) or Ph 9561 7021 so we can organise details.

## Interim Ministry Team Update

As we are sure you are all aware of the changes experienced within our ministerial team of late.

We all hoped that by the second half of the year, we might have a new MOW (Minister of the Word) amongst us, or finalised and a date set for their arrival!

Unfortunately, things haven't worked out quite as immediately as we would have hoped.

The Interim Ministry Team, will continue until the end of the year, this includes our "Existing Team Members" & Rev Warren Bartlett (Team Leader), Rev Brace Bateman & Rev Evan Laidlaw.

We appreciate the support and wisdom all three are bringing to our congregation, and ask for your continued prayers as we minister together.

Please continue to pray for the JNC as they continue conversations with a potential MOW and prayer for each other as we journey together in working towards all that is happening for us as a congregation, pray for the steering committees recommendations and the upcoming elections of the Church Council.

Together as people who serve,

Alanee, Alison, Belinda, Heather, Warren, Brace & Evan

Also for your information

- Alanee Hearnshaw will be away from 16 to 30 August
- Evan Laidlaw will be leaving shortly for a 7 week holiday
- Heather is now working until 6pm on a Thursday and leaving at 4pm on a Friday.

## Experience Implementing ‘Serving and Loving Together’

### Recommendation 1 concerning meetings of groups.

At its July meeting, the Communications Committee considered how it would respond to ‘Serving and Loving Together’ Recommendation 1 concerning meetings of groups. Following initial discussion, we chose to view Recommendation 1 as making groups aware of possibilities, not dictating a particular approach. We noted that other groups in the Church may well take a different approach to implementing Recommendation 1.

The Communications Committee will apply ‘Serving and Loving Together’ Recommendation 1 as follows. The agenda will be prefaced with the church mission statement to place clearly in our minds at the start of each meeting the overall outcome we are aiming to facilitate. On a rotating basis as the first agenda item, committee members will lead a short sharing time using a bible reading or some other material to help us draw focus on an aspect of how improving communications will help the Glen Waverley Uniting Church congregation in meeting God and serving and loving together. This time will end with a short time of prayer.

While it may seem obvious, as we applied this the first time, we found that an initial explicit reminder about why we were there and a short time of sharing helped bring us together in spirit and helped with the subsequent business of the meeting.

We hope that sharing this experience may be of value to other groups. We will be interested to learn from the experience of others.

## India Craft

An opportunity to go through your sewing/craft box & cull the unwanted extras!

Looking for cross stitch fabric & threads to take to women in India, that have been rescued from being trafficked. Small scraps are just still useful.

By the 15 of August please.

Thank you - Alanee

## ACT FOR PEACE Syrian Appeal

Check out the video clip at <http://vimeo.com/70902113>.

Either play it online or click the download button, then choose the version you want. Then right click on that version and go to “Save link as ....”



## Inclusive Community

Inclusive Community members have had a busy month preparing for the Pastoral Partners workshop and English Conversation classes.

We are excited about the possibilities of this Pastoral Partners program and if we decide to introduce the program, we hope that it will enhance our pastoral care here at GWUC. We have enjoyed meeting with Sharonne Price this weekend and look forward to hearing her speak at our morning services today.

English Conversation Classes, which began on Thursday 1 August, will run collaboratively with The Hub. These classes will continue to run every Thursday during school terms from 11.15am until 12.15pm. We would like to thank Hub volunteers who have expressed an interest in helping with these classes. A roster will be made up in the next week.

On Sunday 14 July we had a Munch With a Bunch Lunch at Glen Waverley RSL, where fifty- three people enjoyed a lovely lunch and good company.

Our next committee meeting will be held on Monday 5 August at 10am in the outer vestry. All welcome.

## Roster Duties

With the decision of the congregation to move towards a smaller council of 10 elected Councillors and Elders, we will not have the same number of Elders to call upon to undertake the regular duties of assisting the ministers in worship. Accordingly, we are extending an invitation to all members of the congregation to reflect on how they might wish to assist with worship duties. These duties are spelled out on the wiki page at <http://wiki.gwuc.org.au/gwuc/EldersDuties>, and this will be progressively updated to reflect the new structures as they come into operation.

The need is very real - we need about 50 people to maintain an adequate roster of welcoming, communion serving and vestry/prayers of the people volunteers. Without such volunteers, our worship services will cease to function effectively. You can choose which of these (or even all of them) you undertake, and we can assist with any questions you may have (please ask at the Office). Please reflect prayerfully on how you can be engaged in helping in worship. Ask any current Elder - they will tell you how it can be a rich and rewarding spiritual dimension to your worship life.

# Safe Church Training

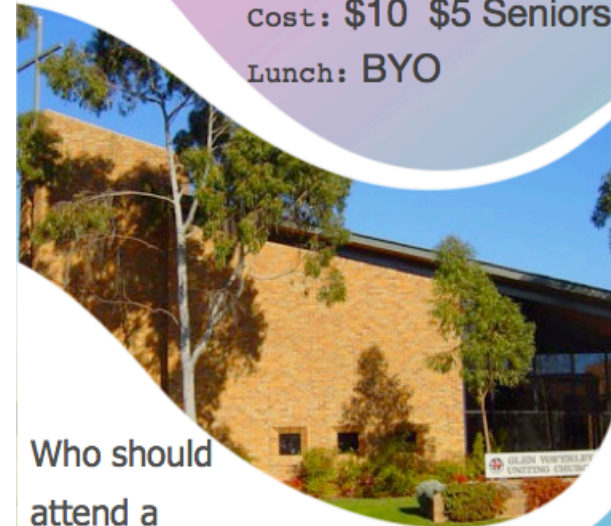
When: Saturday 31 August

Time: 9:30am - 4pm

At: Glen Waverley Uniting Church

Cost: \$10 \$5 Seniors & Students

Lunch: BYO



The Uniting Church affirms that all people are made in the image of God. The Uniting Church commits itself to the care, protection and safety of all people with whom it comes contact. As a community of faith, we are committed to providing a safe environment for both children and adults to encounter God, to develop relationships as part of a community and grow in faith.

Who should attend a

## Safe Church Workshop?

Anyone who is involved in ministry with young people (0-18 years old)

Anyone interested in learning more about practical ways of making our churches safe places.

People in leadership and pastoral roles within the congregation, such as Elders, Church Council Members and Ministers

Each participant will receive a comprehensive manual. The topics covered in the workshop will include:

- Safe Church Foundations
- Protecting vulnerable people
- Child Protection
- Duty of care and accountability
- Understanding and responding to abuse
- Protective behaviors
- Safe leadership
- Safe programs and environments
- Uniting Church Policy and Procedures



Brought to you by  
the Culture of Safety Unit, Synod

Glen Waverley Uniting Church  
p. 9560 3580 e. [office@gwuc.org.au](mailto:office@gwuc.org.au)





### **THE HUB**

The Hub continues to welcome and offer hospitality to those who enter our church building, and relationships continue to grow with those who visit The Hub regularly.

Some of our visitors have returned to their homes overseas and are keeping in contact with us by email. They are very thankful for their times spent at The Hub, and some hope to return to Australia and The Hub one day.

Our next special morning tea will be a Muffin Morning on Thursday August 29th, 10am -12noon. Come and bring your family and friends. All ages are welcome.

Join us during the week for a cuppa, a biscuit and a chat. The Hub operates on Tuesday and Thursday 10am - 2pm, and Wednesday 10am - 12noon, during school terms. We would love to see you.

### **COOEE**

Cooee continues to meet on a Friday at lunch time. New people are always welcome to come and enjoy some company while having lunch and a chat, followed by a few games of UNO or Scrabble. BYO lunch. Tea, coffee and biscuits are provided.

### **LEISURE TIME**

Leisure Time guests continue to enjoy their Mondays at our church. As well as a variety of activities at the church, they have had two outings in the last six weeks. They enjoyed singing along and even dancing at Morning Melodies at Waverley RSL on June 17, followed by a restaurant lunch. The second outing included the movie "Still Mine" and lunch at Mt Waverley on July 29.

Our numbers have been lower in recent weeks. Sadly, one of our guests, Maria, passed away in June, and two others have moved into residential care. This leaves vacancies for new guests and we are seeking assistance to connect with isolated seniors who would enjoy friendly company on Mondays. We would appreciate any help that the congregation may give us to bring new guests to our attention. Please feel free to hand out the Leisure Time brochures on the Community Hub noticeboard. Please contact Margaret Fraser (9803 7653) or the Church Office if you know someone or if you have any queries.

Our lovely two course hot dinners are still a hit with one and all, along with the transport our drivers provide. All our wonderful volunteers maintain a high level of care and compassion. We thank God that we are able to provide this much appreciated community outreach.

### **PLAYGROUP**

All three playgroups have been bustling and happy this term. When it has been cold or wet, the children, helped by their Mums, Dads or grandparents, have been busy with a variety of craft activities, books and puzzles. On sunny days the cubby house, slide and sandpit have been the popular choices. Nursery rhyme time continues to be a highlight of each session.

We are very fortunate to have such an experienced and dedicated team of leaders and helpers. They have been really tested this term as we are being almost swamped with enthusiastic visitors and would-be new members. Each group is full to overflowing, and we have a lengthy waiting list! Anyone who might be interested in joining our team as a leader or helper would be most welcome to visit and see this part of our Church's mission to our local community.

If you would like to know more about any of these groups, or if you would like to help in any way, please contact Judith on 9803 8373.